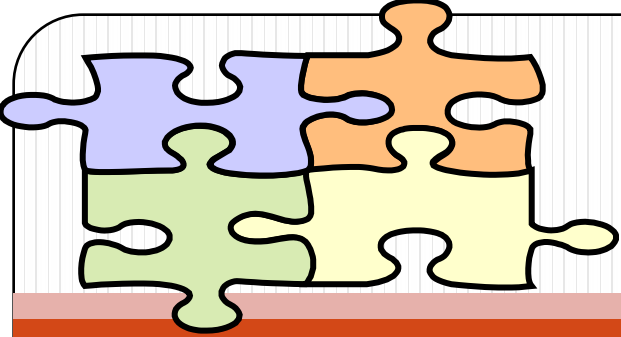


# Interrelated Resource Teachers

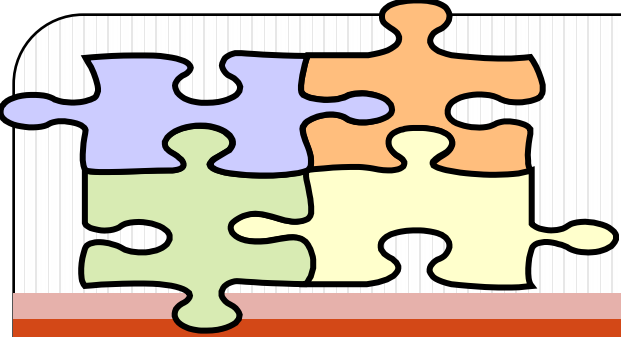
- Certified to teach and support students in various special education programs
- Certified to teach general curriculum and content area materials
- Certified to teach students in grades K-12
- Teach students in two instructional models
- Case Managers for Students with Disabilities
- Advocates for student programs



# Certified Teachers for Special Education Programs

**Certified to teach students in various special education programs**

- **Specific Learning Disability (SLD)**
  - ❖ This program supports students with deficits in specific academic areas such as Math, Reading, and Writing.
  - ❖ Students in this program may have a deficit in or have difficulties processing one or all academic areas.
  - ❖ Students in this program can be gifted in one academic area and have a deficit in another academic area.



# Certified Teachers for Special Education Programs

- **Other Health Impairment (OHI)**
  - ❖ This program supports students with health issues that affect their learning abilities.
  - ❖ Students with Attention Deficit Disorder (ADD) can fall under this program.
  - ❖ Students with Attention Deficit and Hyperactivity Disorder (ADHD) can fall under this program.
  - ❖ Students with other medical issues or problems that affect their learning can fall under this program.



# Certified Teacher for Special Education Programs

## Emotional Behavior Disorder (EBD)

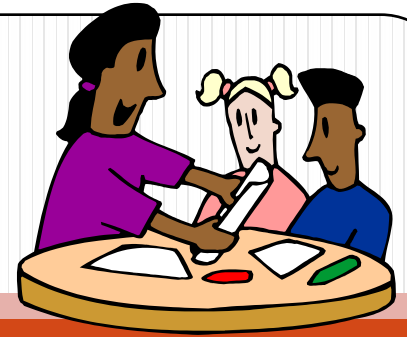
- ❖ This category support students with behavior/emotional issues that affect their learning abilities.
- ❖ Students with Attention Deficit Disorder (ADD) can fall under this program.
- ❖ Students with Attention Deficit and Hyperactivity Disorder (ADHD) can fall under this program.
- ❖ The disability can bring about various types of emotions; crying easily, quickly getting upset, unknown fear. These student may not be able to control these emotions w/out interventions and strategies.
- ❖ The disability can bring about various types of behaviors; intense anger issues, extreme disorganization, avoidance/withdrawal issues. These student may not be able to control these behaviors without interventions and strategies.



# Certified Teachers

- Certified in general curriculum and content areas
- Teach basic Math, Reading, and Language Arts / Grammar / Writing
- Teach Social Studies and Science
- Teach Affective Skills





# Teaches in two instructional models/formats

▪ Resource teachers generally teach in two formats: Direct teaching and Collaborative teaching

1. Direct teaching is also called Pull Out.

- Students are pulled out of the regular education classroom setting, and they are taught in a resource class with other students in a small group setting( less than 11 students)

- Students are taught the same grade level curriculum at a slower pace.

- Teachers may go back over prerequisite information/remedial.

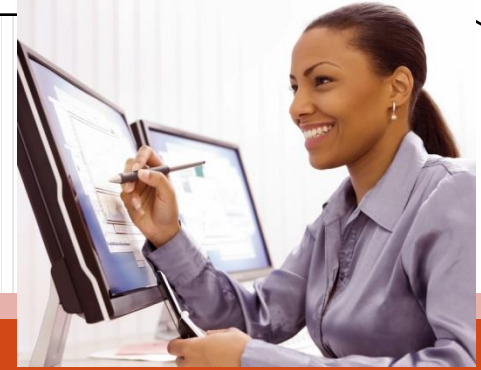
- Teachers may use lower grade material to build foundations and prerequisite knowledge.



## Teaches in two instructional models/formats

### 2. Collaborative classes are also called inclusion class.

- Students with disabilities remain in the regular education classroom setting, but the students have two collaborative teachers that teach and support the students during the class period.
- Students are taught the same grade level curriculum.
- Students with disabilities in this group should be able to handle the pace of the collaborative class.
- Peer teaching is practiced and encouraged.
- Grouping is practiced.
- Both teachers use their expertise and skills to address students' needs together.
- Teachers may put students in small groups in the collaborative setting as well.



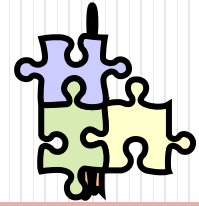
# Case Managers

- **Resource teachers are also assigned as Case Managers.**
- They can be the case manager for all or some of the students with disabilities they teach in the direct or collaborative settings.
- They track the progress of goals and objectives annotated on their students Individual Education Plan (IEP).
- They keep anecdotal data on their students.
- They conduct annual IEP reviews of their students with an IEP committee (parents, teachers, advocates, administration, special education teacher, etc..)



# Case Managers

- They conduct the reevaluation of services for students whose eligibility has reached three years.
- Communicate academic concerns and progress of students to parents.
- Ensure that their students are being properly serviced and supported in the Least Restrictive Environment (LRE) possible. LRE is the students' learning environment.
- Ensure that the tools, equipment, and support are made available to their student's in accordance with their IEPs.



# Advocates



- Resource teachers are advocates for programs that help their students learn.
- They research and use various types of programs that meet their students learning needs.
- Resource teachers teach, model, and demonstrate strategies that help students compensate for their deficits.
- Resource teachers use various types of tools that covers many types of learning styles.