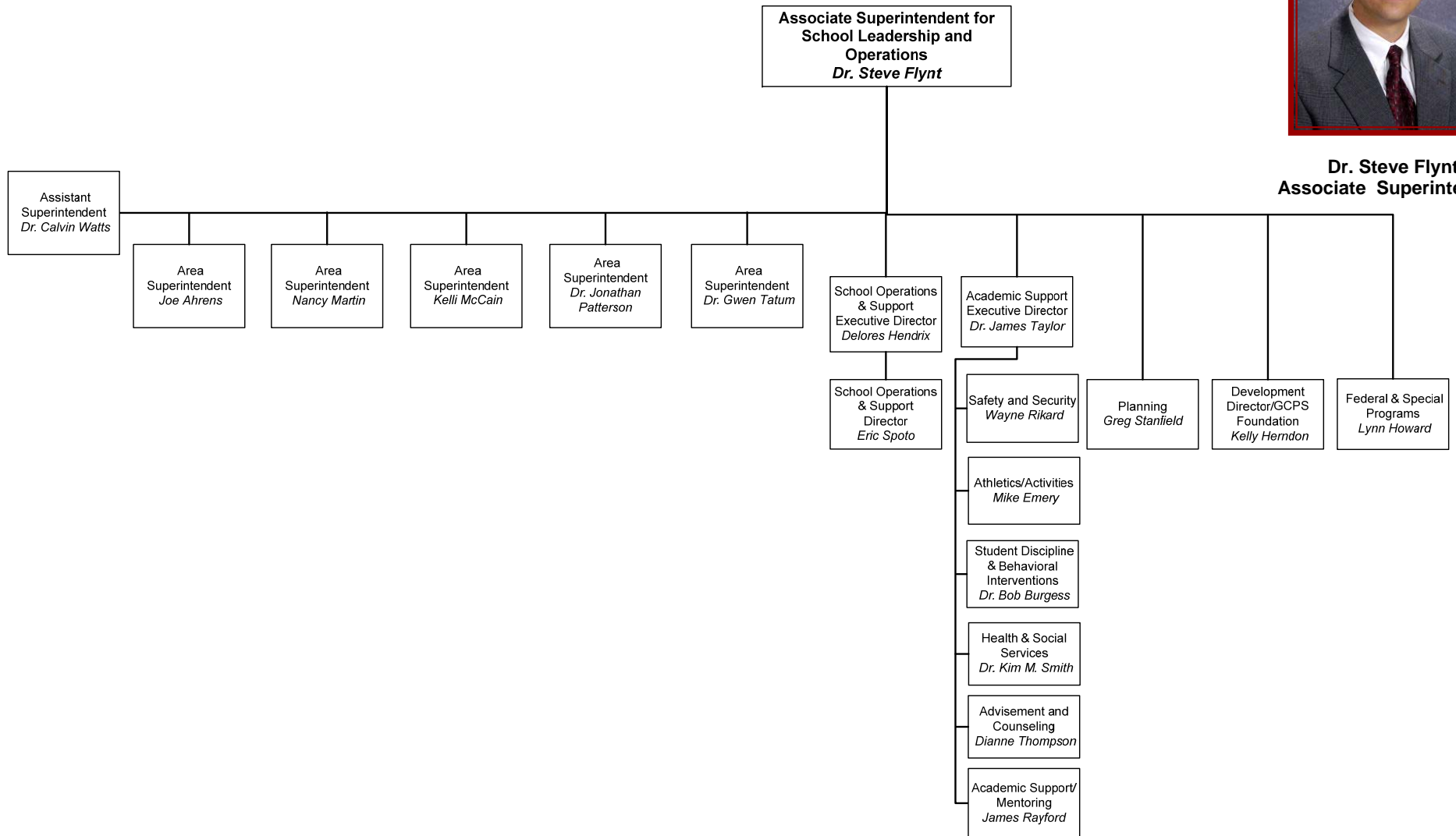


Division of School Leadership & Operations
Dr. Steve Flynt, Associate Superintendent
678-301-7000 / fax: 678-301-7003
Instructional Support Center



Dr. Steve Flynt,
Associate Superintendent



The Division of School Leadership and Operations provides leadership and support to local schools as well as coordinates annual forecast and redistricting processes. The Associate Superintendent oversees the offices of Assistant Superintendent, Area Superintendents, Development, Planning, School Operations and Support, Academic Support, and Federal and Special Programs.



Dr. Calvin Watts,
Assistant Superintendent
678-301-7387

Special Entities:

Buice School, GIVE East, GIVE West, Gwinnett County Online Campus, Gwinnett School of Mathematics, Science, & Technology, Hooper Renwick, Maxwell HS of Technology, Monarch School, Oakland Meadow School, New Life Academy of Excellence, and Phoenix HS

Office of the Area Superintendents

678-301-7255 / fax: 678-301-7326
(Instructional Support Center)

The **Office of Area Superintendents** leads the system's efforts in ensuring high academic achievement for all students. The Area Superintendents supervise all local school principals in implementing a performance culture and attaining desired results through the Results Based Evaluation System (RBES), as well as maintaining safe and orderly day-to-day school operations.



Dr. Gwen Tatum
678-301-7266

Area I Clusters:
Berkmar, Brookwood, and Central Gwinnett



Kelli McCain
678-301-7257

Area II Clusters:
Collins Hill, Duluth, Norcross, and Peachtree Ridge



Dr. Jonathan Patterson
678-301-7257

Area III Clusters:
Meadowcreek, Parkview, and Shiloh



Joe Ahrens
678-301-6141

Area IV Clusters:
Archer, Dacula, Grayson, and South Gwinnett



Nancy Martin
678-301-6141

Area V Clusters:
Lanier, Mill Creek, Mountain View, and North Gwinnett

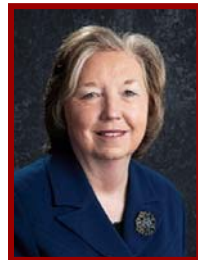
Office of School Operations and Support

Delores Hendrix , Executive Director

Eric Spoto, Director

678-301-7266 / fax: 678-301-7003
(Instructional Support Center)

The **Office of School Operations and Support** assists the Associate Superintendent, the Area Superintendents, and the local school principals by ensuring the divisional operations and processes maximize student achievement. The Executive Director and Director serve as liaisons to other divisions on operational matters that impact the local school.



Department of Federal and Special Programs

Lynn Howard Director

678-301-7059 / fax: 678-301-7058
(Instructional Support Center)

The **Department of Federal and Special Programs** coordinates several compensatory education programs mandated by federal and state law. Title I is a federally funded, supplemental program designed to assist K-12 learners who are educationally disadvantaged. This program is intended to support eligible students in the achievement of content standards as measured by criterion referenced competency tests. This is accomplished by ensuring high standards for all; increasing quality instructional time; improving instruction through staff development; enhancing parent participation in the educational process; expanding educational resources; and strengthening accountability. The office also coordinates the state funded Early Intervention Program (EIP), which provides additional instructional resources to help targeted students reach grade level performance in the shortest possible time





Department of Academic Support
Dr. James Taylor, Executive Director
678-301-7286 / fax: 678-301-7326
(Instructional Support Center)

The **Department of Academic Support** provides leadership and support in helping schools maintain an environment where teaching and learning are the centerpieces, as well as providing educational and recreational opportunities for students, staff and stakeholders through our community schools program. The offices within this department develop policies and procedures that impact student discipline, gender equity, safety and security, interscholastic athletics, truancy, planning, counseling, student health, and community support.

Office of Advisement and Counseling
Dianne Thompson, Director
678-301-7372 / fax: 678-301-7374
(Instructional Support Center)



The **Office of Advisement and Counseling** works with advisement teams in each school to provide each middle and high school student with caring and knowledgeable adults to challenge them and help them make wise choices throughout their school career. Advisement and Counseling also coordinates the critical work of counselors in each school as they remove barriers to academic achievement. Graduation coaches provide support and direction for middle and high school students towards earning promotion and graduation. Students need academic guidance, individual and group support as they progress through school to assure successful transition to the post-secondary options of their choice.

Office of Athletics, Student Activities, and Community Schools
Mike Emery, Director
678-301-7274 / fax: 678-301-7269
(Instructional Support Center)



The **Office of Athletics, Student Activities, and Community Schools** provides leadership and support for all extracurricular programs associated with our schools. This office develops policies and procedures to organize all intramural and interscholastic athletic programs and makes schools aware of state Board policies, local Board policies, state standards, and Georgia High School Association policies that pertain to extracurricular activities. The Adapted Sports program for students with physical disabilities is managed through this office. This department also manages the Foreign Exchange Program, the U.S. Senate Youth Program and the Georgia Scholars program. All community school activities, as well as non-school use of facilities, are organized through this office, extending educational and recreational opportunities to the entire community.

Office of Health and Social Services
Dr. Kim M. Smith, Director
678-301-7270 / fax: 678-301-7269
(Instructional Support Center)



The **Office of Health and Social Services** is responsible for the direction of support and intervention services provided by school nurses and school social workers. These staff members provide academic support to local schools by enhancing student adjustment and achievement through direct and indirect interventions to assist them in maximizing their academic success. Health support services include individualized health management plan assistance, maintaining community liaison roles with public health, AED coordination, training for local school clinic workers, student immunization coordination, and infectious disease prevention and coordination. Social support services include school social worker services and interventions, oversight of the student attendance protocol, local school attendance collaboration, and coordination of the Homeless Education Program for the system. Other academic support roles include management of the Home School Program, providing oversight and support to local schools for student enrollment and admissions, first level of appeal for student transfer issues and direct applications of medical/legal student transfers, and maintenance of the mandated reporter log for the system.

Office of Student Discipline and Behavioral Interventions
Dr. Bob Burgess, Director
770-513-6607 / fax: 770-513-6840
(Lawrenceville East)



The **Office of Student Discipline and Behavioral Interventions** provides leadership and support in helping schools and school personnel maintain a safe and orderly environment for teaching and learning. The department provides advice to school officials in dealing with discipline matters, provides training for school officials to deal with inappropriate student behavior equitably, provides oversight of Positive Behavior Interventions and Supports, and protects the due process rights of students who violate school rules and policies. The Office of Student Discipline and Behavioral Interventions offers effective interventions for students and coordinates/facilitates the implementation of a harassment-free environment conducive to teaching and learning for our students and staff.

Office of Academic Support
James Rayford, Director
678-301-7321/ fax: 678-301-7326
(Instructional Support Center)



The **Office of Academic Support** collaborates with school leadership staff to identify at-risk students who are potential candidates for participation in the GCPS Community-based Mentoring Program. The director also provides guidance for the operation of mentoring problems throughout the district as well as networks with community-based agencies and organizations to establish a candidate pool of and training for adults who want to serve as mentors. Another role involves providing support for other district programs and initiatives that are designed to promote academic rigor for minority students.

Office of Safety and Security
Wayne Rikard, Chief
770-513-6715 / fax: 770-513-6836
(52 Gwinnett Drive)



The **Office of Safety and Security** consists of 24 P.O.S.T (Police Officer Standards and Training) certified Police Officers and office staff. Safety and Security grew in size to 45 when oversight of the School Crossing Guards Program was added effective with the 2011-12 school year. The department is responsible for providing a safe and secure learning environment for our students and staff. The officers respond to needs of our students, staff and community. In addition to enforcing the laws of the State of Georgia, officers teach classes both during the school day to students and to community groups in the evenings. The proactive direction taken by the School Resource Officers is recognized by all local law enforcement agencies and the community. The Gwinnett County School Police department maintains State of Georgia Law Enforcement Certification, a distinction currently held by only two public school system police agencies in the state.

Office of Development
Kelly Herndon, Director
678-301-7287 / fax: 678-301-7326
(Instructional Support Center)



The **Office of Development** provides leadership by strengthening internal and external relationships to support the academic mission of Gwinnett County Public Schools. The Office is responsible for all aspects of advancement, including alumni relations, communications, integrated marketing, fundraising, donor relations, and government relations.

Office of Planning
Greg Stanfield, Director
678-301-7085 / fax: 678-301-7087
(Instructional Support Center)



The **Office of Planning** provides an annual forecast including a five-year forecast based on historical information and county growth trends and projections. Additionally, this department is involved in the formation of the SPLOST building program, coordinates the efforts of the public redistricting process including school zone formation and modifications and organizes the tasks of the school naming process. These functions assist the district in planning for present and future growth thereby benefiting students and the community alike.