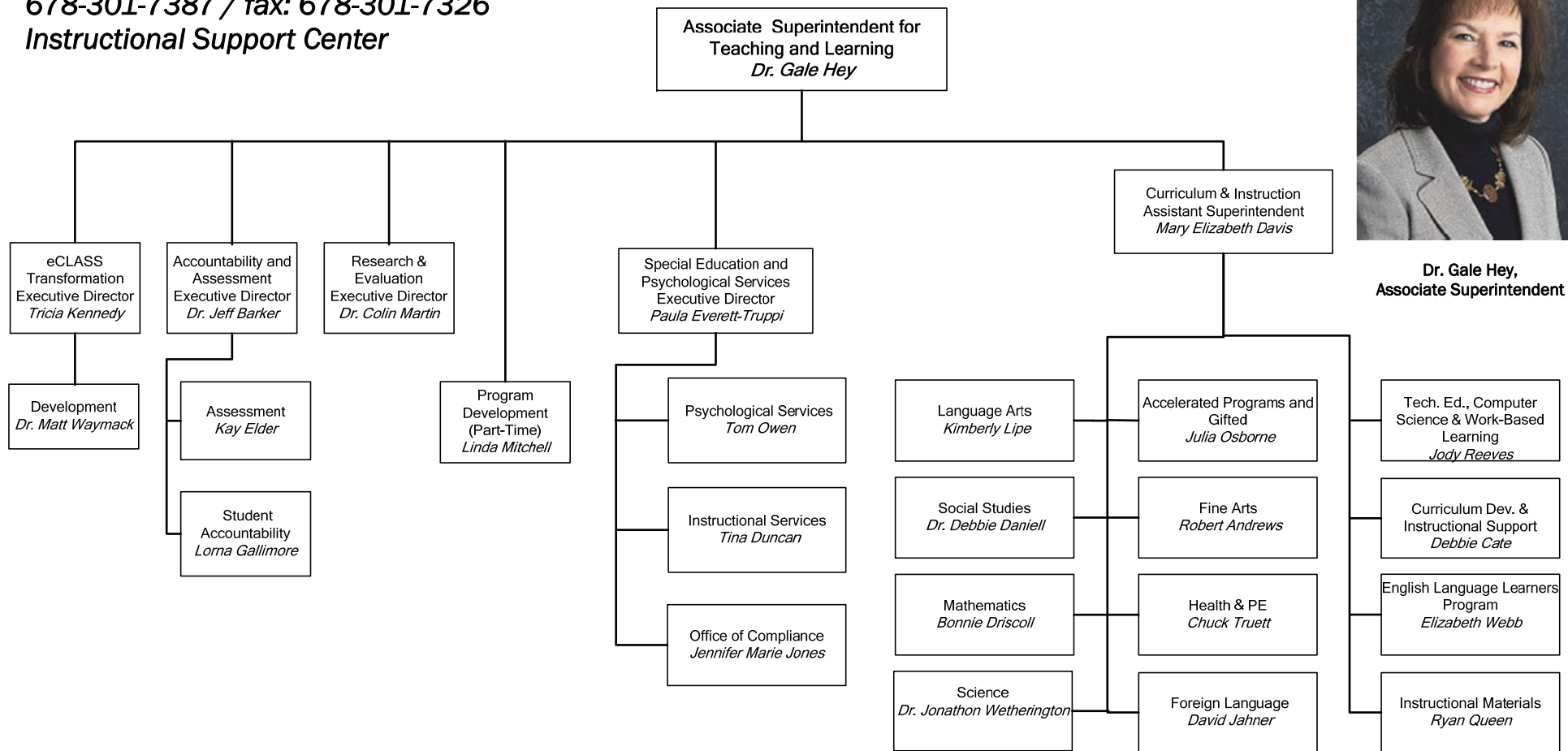


**Division of Teaching and Learning**  
**Dr. Gale Hey, Associate Superintendent**  
**678-301-7387 / fax: 678-301-7326**  
**Instructional Support Center**



**Dr. Gale Hey,**  
**Associate Superintendent**



**Strategic Objectives:**

- Provide and maintain a rigorous Academic Knowledge and Skills (AKS) curriculum that is clearly correlated to the Georgia Performance Standards and prepared for alignment and integration with the Common Core State Standards.
- Support innovative, integrated and accelerated learning activities that challenge all students to apply knowledge and skills by engaging in relevant, meaningful and differentiated tasks focused on information processing, problem-solving, decision-making and collaboration.
- Design, develop and administer comprehensive assessments, aligned with rigorous AKS instruction, for the purpose of using results to plan improved learning for every student.
- Collaborate with teachers and administrators in planning and providing on-going, job-embedded professional learning opportunities that are clearly linked to the data-driven needs to improve performance for all students.



**Curriculum and Instruction**  
**Mary Elizabeth Davis, Assistant Superintendent**  
 678-301-7290 / fax: 678-301-7208  
 (Instructional Support Center)

The **Department of Curriculum and Instruction** leads the development of a world class curriculum and the effective implementation of Quality Plus Teaching Strategies. The office promotes the Academic Knowledge and Skills curriculum, supports instruction and assessment of the AKS through a variety of resources, facilitates instructional materials reviews and adoption as well as provides staff development training for teachers and staff. Gwinnett County Public Schools' Curriculum and Instruction Department houses the curriculum offices that lead and support systemwide instruction and assessment of the Academic Knowledge and Skills (AKS) as well as Online Campus.



**Office of Language Arts**  
**Kimberly Lipe, Director**  
 678-301-7011 / fax: 678-301-7208  
 (Instructional Support Center)

The **Office of Language Arts** provides leadership and instructional support to schools in the area of Language Arts curriculum. The office assists teachers and staff with appropriate resources and training to teach students through a balanced literacy approach to become successful readers, writers, listeners, and oral communicators.



**Office of Mathematics**  
**Bonnie Driscoll, Director**  
 678-301-7037 / fax: 678-301-7208  
 (Instructional Support Center)

The **Office of Mathematics** provides leadership and instructional support to schools in the area of Mathematics curriculum. The office supports the development of students into competent mathematical problem solvers with a deep conceptual understanding of numbers. Students will reason and communicate mathematically, make connections among mathematical ideas, and become proficient with appropriate computational tools and techniques.

**Office of Science**  
**Dr. Jonathon Wetherington, Director**  
 678-301-7036 / fax: 678-301-7208  
 (Instructional Support Center)

The **Office of Science** provides leadership and support to schools in the area of Science curriculum. The office assists teachers and staff with resources and training to teach problem-solving, inquiry, and critical thinking skills which are embedded in the curriculum throughout the students' K-12 science experience.



**Office of Social Studies**  
**Dr. Debbie Daniell, Director**  
 678-301-7028 / fax: 678-301-7208  
 (Instructional Support Center)

The **Office of Social Studies** provides leadership and support to schools in the area of Social Studies curriculum. The office manages resources and training to assist teachers and staff with providing quality instruction on discipline-based content with interpretative skills focused on maps and globes, information processing, social participation, and problem solving.



**Office of Curriculum Development and Instructional Support**  
**Debbie Cate, Director**  
 678-301-6061 / fax: 678-301-7208  
 (Instructional Support Center)

The **Office of Curriculum Development and Instructional Support** supports schools in all areas of the AKS curriculum. This includes providing professional learning as well as support materials such as instructional planners with Indicators of Achievement, sample interventions and extensions, correlations with standardized tests, and electronic lesson plans for the AKS.

### Office of English Language Learner Programs (ELL)

Elizabeth Webb, Director  
678-301-7077 / fax: 678-301-7049  
(Instructional Support Center)

The **Office of English Language Learner Programs (ELL)** provides leadership and support to ensure that English Language Learners in Gwinnett County Public Schools achieve excellence by attaining proficiency in English and meeting or exceeding grade level AKS in all content areas. Support services include professional development, guidance on research-based instructional practices, intake for middle and high school ELLs, and translation and interpretation services for parents of ELLs.



### Office of Health and Physical Education

Chuck Truett, Director  
678-301-7040 / fax: 678-301-7009  
(Instructional Support Center)

The **Office of Health and Physical Education** provides leadership and support to schools in the area of Health and Physical Education curriculum. The office provides resources and training workshops for teachers and staff. Students learn to become advocates of healthy living, choose healthy behaviors for life and develop a physically active lifestyle. Students are also taught to maintain a health-enhancing level of physical fitness during their school-age years and beyond.



### Office of Fine Arts

Robert Andrews, Director  
678-301-7015 / fax: 678-301-7203  
(Instructional Support Center)

The **Office of Fine Arts** provides leadership and support to schools in the area of Fine Arts which includes dance, music, theatre arts, and visual arts. Commitment and support by central and local level administrators, community, parents, and students enable the GCPS Fine Arts programs to achieve quality standards as an essential element in a world-class educational program.



### Office of Instructional Materials

Ryan Queen, Director  
678-301-6828 / fax: 678-301-6829  
(Instructional Support Center)

The **Office of Instructional Materials** manages the procurement and distribution of quality instructional materials and technology resources to meet the needs of all learners. Schools are supported as responsible stewards of their financial resources with the selection, purchase and inventory of instructional materials. In addition, the review, pilot, and adoption process for new materials is managed and directed through this office.



### Office of Foreign Language

David Jahner, Director  
678-301-7020 / fax: 678-301-7209  
(Instructional Support Center)

The **Office of Foreign Language** provides leadership and support to schools in the area of Foreign Language curriculum. The office provides resources and training workshops for teachers and staff enabling them to provide quality instruction, encourage interdisciplinary collaboration as they target different languages and diverse cultures.



### Office of Technical Education, Computer Science, & Work-Based Learning

Jody Reeves, Director  
678-301-7050 / fax: 678-301-7070  
(Instructional Support Center)

The **Office of Technical Education** provides leadership and support to teachers in the Technical Education field which prepares high school students for postsecondary education and the demands of the 21st century economy. All courses provide an environment where students can learn the relevance of combining technical skills with academic knowledge. Various resources and training workshops are available to assist teachers and staff in delivering quality instruction in these areas.



### Office of Accelerated Programs & Gifted Education

Julia Osborne, Director  
678-301-7020 / fax: 678-301-7017  
(Instructional Support Center)

The **Office of Accelerated Programs & Gifted Education** provides leadership and support to schools in the area of Gifted Education curriculum. The Gifted Education program manages resources and training to enhance learning opportunities that are advanced and accelerated in content and pace. Gifted education classes offer academic experiences that extend the Academic Knowledge and Skills.





**Department of Special Education and Psychological Services**  
Paula Everett-Truppi, Executive Director  
678-301-7110 / fax: 678-301-7222

The **Department of Special Education and Psychological Services** supports the Individual Educational Programs of students ages three through twenty-one years of age who are eligible for special education and related services within the district. The special education services are provided on a continuum from the least restrictive to more restrictive environments and are contingent upon educational needs of the student. The department provides a full array of assessment and special education interventions for students requiring such services. The Department works collaboratively with students, schools, families, and the community to increase student achievement and to promote post-secondary success for all students with disabilities.

**Office of Instructional Services**

Tina Duncan, Director  
678-301-7107 / fax: 678-301-7222  
(Instructional Support Center)

The **Office of Instructional Services** provides leadership and support for the delivery of special education instructional programs. This office works collaboratively with local schools to assist students with disabilities in acquiring the knowledge and skills specified by their Individualized Education Program, and local and state assessment standards. Staff development opportunities are provided for assistant principals, teachers, paraprofessionals, and central office staff.



**Office of Psychological Services**

Tom Owen, Director  
678-301-7100 / fax: 678-301-7098  
(Instructional Support Center)

The **Office of Psychological Services** provides an extensive array of psychological services to each of our schools. The services are designed to assist schools with the implementation of research-based interventions for students with academic and/or behavior problems. School psychologists provide comprehensive psycho-educational assessments, participate on Student Support Teams (SST) and special education teams. Psychologists also consult regularly with teachers and parents, counsel students, participate in crisis situations and provide in-services for our teachers regarding a wide variety of topics.



**Office of Special Education Compliance**

Jennifer Marie Jones, Director  
678-301-7104 / fax: 678-301-7222  
(Instructional Support Center)

The **Office of Special Education Compliance** supports schools in legal matters arising from federal and state regulations governing the education of students with disabilities. The duties of the office include coordinating all due process issues such as early resolution conferences, mediations, and due process hearings. The office also coordinates Section 504 issues for students throughout the district.





**eCLASS Transformation**  
**Tricia Kennedy, Executive Director**  
 678-301-7293 / fax: 678-301-7254  
 (Instructional Support Center)

The **Department of eCLASS Transformation** facilitates the cross divisional development and implementation of eCLASS. eCLASS is a digital content, learning, assessment, and support system initiative being developed by Gwinnett County Public Schools. It is a multi-year integrated enterprise solution that will integrate existing technology resources and projects with a number of new resources and applications to enhance student engagement and the teaching and learning process. It will bring together curriculum and instructional resources, assessment items, professional development, student information, and gradebook functions in one place, making it easier for teachers to access tools that will help them improve student learning.



**Dr. Matt Waymack, Director of Development**  
 678-301-6134 / fax: 678-301-7254  
 (Instructional Support Center)



**Office of Program Development**  
**Linda Mitchell, Director**  
 678-301-7046 / fax: 678-301-7003  
 (Instructional Support Center)

The **Office of Program Development** leads the district in charter school initiatives and innovative educational programs. The Director also provides leadership by working with central office and local school leaders to improve targeted processes leading to improved student achievement. The office is responsible for assisting in the development of Local School Plans for Improvement (LSPIs) and facilitating the Investing in Educational Excellence (IE2) contract for the district.



**Office of Research and Evaluation**  
**Dr. Colin Martin, Executive Director**  
 678-301-7090 / fax: 678-301-7088  
 (Instructional Support Center)

The **Office of Research and Evaluation** provides direct support to accelerate school and systemwide improvement. The Department of Research and Evaluation provides technical support for the Results-Based Evaluation System; leadership for and management of school performance reports; support for the development of data systems; management of the instructional research approval process; and consultation to schools and departments for research activities.



**Department of Accountability and Assessment**  
**Dr. Jeff Barker, Executive Director**  
 678-301-7025 / fax: 678-301-7202  
 (Instructional Support Center)

The **Department of Accountability and Assessment** provides leadership and support by assisting schools in measuring student performance against national, local, and world-class standards, as well as supporting the needs for students as they work to achieve those standards.

**Office of Accountability**  
**Lorna Gallimore Director**  
 678-301-7157 / fax: 678-301-7202  
 (Instructional Support Center)



The **Office of Accountability** provides support in compiling and analyzing system academic achievement data to school improvement initiatives. In partnership with the Information Management Division (IMD), Accountability coordinates the development and management of diagnostic data for instructional improvement. The office guides the development and implementation of the GCAAS (interim) assessments as part of the assessment program. Providing information related to Adequate Yearly Progress (AYP) is another major focus of the Office of Accountability.



**Office of Assessment**  
**Kay Elder, Director**  
 678-301-7053 / fax: 678-301-7202  
 (Instructional Support Center)

The **Office of Assessment** provides leadership and support to schools in the administration of all assessments within Gwinnett's K-12 testing program. School staffs are also supported with interpretation of test results used to evaluate and improve teaching and learning. The office is involved with the full spectrum of assessment ranging from the development of individual test items to facilitating Gwinnett's Gateway assessment program. The goal of the Assessment Office is to support each school with tools to measure and analyze student achievement.