



# Gwinnett County Public Schools

## 2005-06


# STUDENT CALENDAR

### Legend

- First and Last Days of School
- Student Holiday
- Snow Make-up Day or Student Holiday
- Early Release Days (Grades K-8)
- # HS Final Exams (Grades 9-12)

- **Early release days are held twice a year** in elementary and middle schools to allow for parent-teacher conferences. School is dismissed 2½ hours early.
  - **The calendar includes four snow make-up days.** If school is cancelled for inclement weather, students will make up days as follows:
    - **First day missed**— Make up on Feb. 20;
    - **Second day missed**— Make up on March 13;
    - **Third day missed**— Make up on April 14.
    - **Fourth day missed**— Make up on May 25.
- Unused snow make-up days will be student holidays.*

If bad weather causes school to be cancelled or dismissed early, public announcements will be made on GCPS Television, on the school system's website ([www.gwinnett.k12.ga.us](http://www.gwinnett.k12.ga.us)), and via metro-Atlanta radio and television stations. Full-day cancellations usually are announced by 6 a.m.

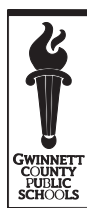


**WATCH GCPS Television**

Adelphia (Ch. 20)\*  
 BellSouth (Ch. 21)  
 Charter (Ch. 22)  
 Comcast (Ch. 24)  
\*Ch. 97 without converter

School Board meetings generally are held the second Thursday of each month.  
*(The 2006 schedule will be set in January.)*

*See reverse side for the 2005-06 Testing Calendar.*



**Gwinnett County Public Schools**  
 P.O. Box 343  
 Lawrenceville, GA 30046-0343  
 (770) 963-8651  
[www.gwinnett.k12.ga.us](http://www.gwinnett.k12.ga.us)

**Updated October 2005**

## August

S	M	T	W	T	F	S
	1	2	3	4	5	6
7	8	9	10	11	12	13
14	15	16	17	18	19	20
21	22	23	24	25	26	27
28	29	30	31			

## September

S	M	T	W	T	F	S
				1	2	3
4	5	6	7	8	9	10
11	12	13	14	15	16	17
18	19	20	21	22	23	24
25	26	27	28	29	30	

## October

S	M	T	W	T	F	S
						1
2	3	4	5	6	7	8
9	10	11	12	13	14	15
16	17	18	19	20	21	22
23	24	25	26	27	28	29
30	31					

## November

S	M	T	W	T	F	S
		1	2	3	4	5
6	7	8	9	10	11	12
13	14	15	16	17	18	19
20	21	22	23	24	25	26
27	28	29	30			

## December

S	M	T	W	T	F	S
				1	2	3
4	5	6	7	8	9	10
11	12	13	14	15	16	17
18	19	20	21	22	23	24
25	26	27	28	29	30	31

## January

S	M	T	W	T	F	S
1	2	3	4	5	6	7
8	9	10	11	12	13	14
15	16	17	18	19	20	21
22	23	24	25	26	27	28
29	30	31				

## February

S	M	T	W	T	F	S
			1	2	3	4
5	6	7	8	9	10	11
12	13	14	15	16	17	18
19	20	21	22	23	24	25
26	27	28				

## March

S	M	T	W	T	F	S
			1	2	3	4
5	6	7	8	9	10	11
12	13	14	15	16	17	18
19	20	21	22	23	24	25
26	27	28	29	30	31	

## April

S	M	T	W	T	F	S
						1
2	3	4	5	6	7	8
9	10	11	12	13	14	15
16	17	18	19	20	21	22
23	24	25	26	27	28	29
30						

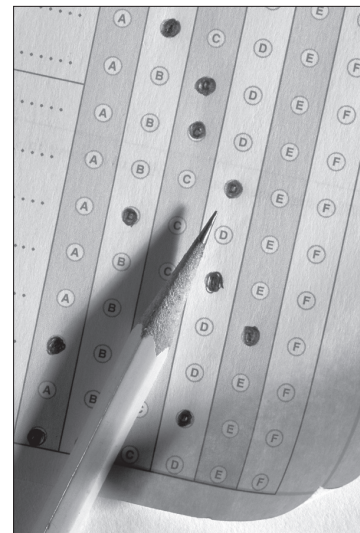
## May

S	M	T	W	T	F	S
	1	2	3	4	5	6
7	8	9	10	11	12	13
14	15	16	17	18	19	20
21	22	23	24	25	26	27
28	29	30	31			

Sign up to receive Gwinnett County Public Schools' e-newsletter... a quick, easy way to learn more about Georgia's largest school system. You'll find stories on teaching and learning, school leadership and governance, and the partnerships that make Gwinnett County Public Schools (GCPS) successful. Look at our homepage for information ([www.gwinnett.k12.ga.us](http://www.gwinnett.k12.ga.us)).

# 2005–06 TESTING CALENDAR

Regular attendance has a direct influence on student achievement. That's why it is important that students be in school every day, and especially on test days. Attendance on test days gives students an opportunity to show what they know, providing teachers with important information about each student's learning. Below is a list of dates when Gwinnett students will take national, state, and system assessments during the 2005–06 school year. While these days have been set aside for test administration, it is important to remember that only a small amount of time—ranging from as little as one hour up to two hours—is actually spent testing on a given day. Please use this reference when planning appointments or time away from school.



## ELEMENTARY SCHOOL TESTING DATES

September 12–16, 2005	Cognitive Abilities Test (CogAT)	Grades 1, 3, and 5
September 19–28, 2005	Iowa Tests of Basic Skills (ITBS)	Grades 3 and 5
January 18 and 19, 2006	Georgia Writing Test/Gateway	Grade 5
March 21–April 11, 2006	Georgia Writing Evaluation Test Window	Grade 3
April 11 and 12, 2006	Gateway (Language Arts and Mathematics subtests)	Grade 4
April 19–25, 2006	Georgia Criterion-Referenced Competency Test (CRCT)	Grades 3–5
April 25–27, 2006	Georgia Criterion-Referenced Competency Test (CRCT)	Grades 1 and 2

## MIDDLE SCHOOL TESTING DATES

September 12–16, 2005	Cognitive Abilities Test (CogAT)	Grade 8
September 19–28, 2005	Iowa Tests of Basic Skills (ITBS)	Grade 8
January 18, 2006	Georgia Writing Test/Gateway	Grade 8
January 30–February 3, 2006	Iowa Algebra Aptitude Test	Grade 7
April 11 and 12, 2006	Gateway (Language Arts and Mathematics subtests)	Grade 7
April 19–25, 2006	Georgia Criterion-Referenced Competency Test (CRCT)	Grades 6–8
May 1–10, 2006	Georgia End-of-Course Test window	Grade 8 Algebra I students
	<i>Final test date for Algebra I to be determined.</i>	

## HIGH SCHOOL TESTING DATES

September 28, 2005	Georgia High School Graduation Writing Test	Grade 11
October 12, 2005	PSAT (free for grades 9–10, cost for grade 11)	Grades 9 and 10 <i>Grade 11 optional</i>
December 5–13, 2005	Georgia End-of-Course Test window, selected courses	Grades 9–12
	<i>Final test dates for selected courses to be determined.</i>	
December 14–16, 2005	Final Exams	Grades 9–12
March 27–30, 2006	Georgia High School Graduation Test (Language Arts, Math, Science, and Social Studies subtests)	Grade 11
April 18 and 20, 2006	High School Gateway (Language Arts, Science, and Social Studies)	Grade 10
May 1–12, 2006	Advanced Placement (AP) Exams	AP students
May 1–10, 2006	Georgia End-of-Course Test window, selected courses	Grades 9–12
	<i>Final test dates for selected courses to be determined.</i>	
May 22–24, 2006	Final Exams	Grades 9–12

**Note:** High schools on block schedule will have an additional testing window for End-of-Course Tests and Final Exams in October and March. Contact your local school with questions.