

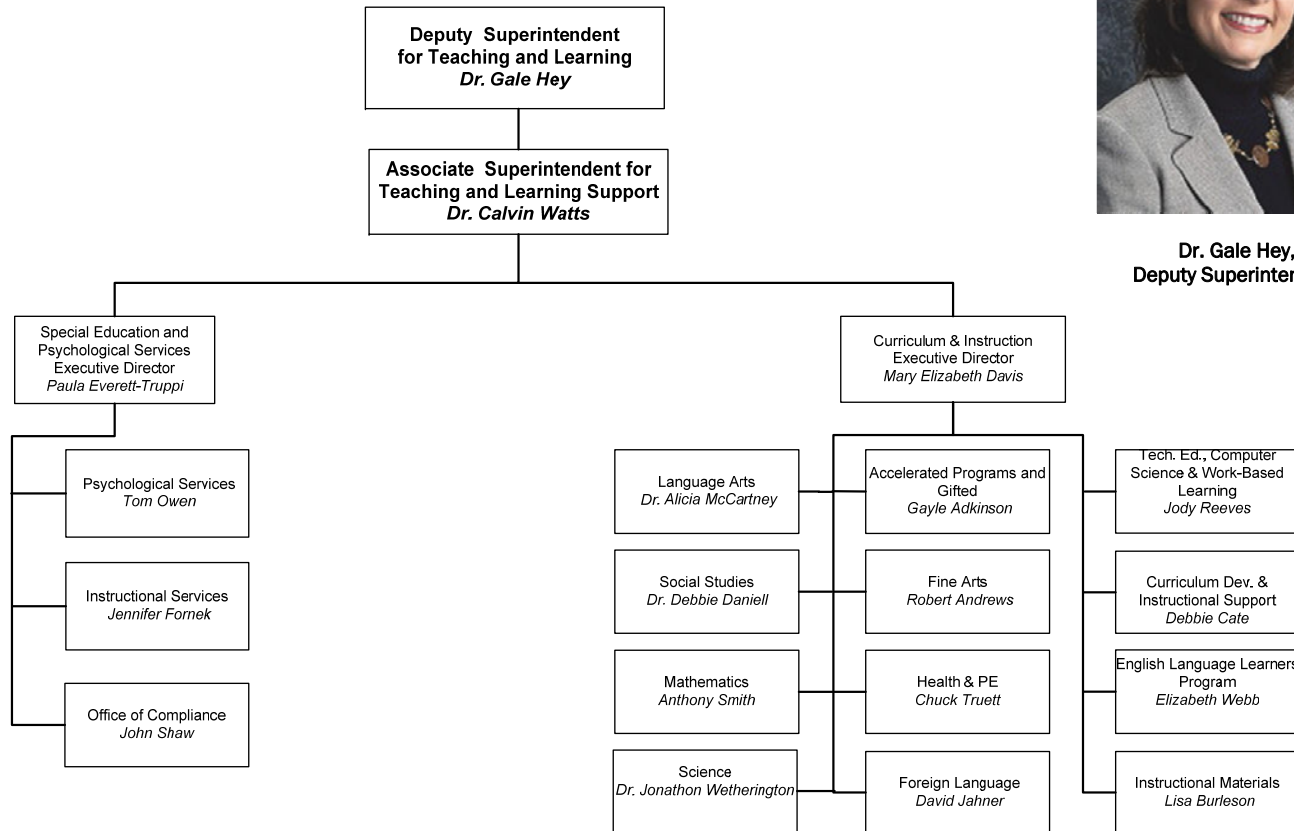
Division of Teaching and Learning Support
Dr. Calvin Watts, Associate Superintendent
 678-301-7387 / fax: 678-301-7326
 Instructional Support Center



Dr. Gale Hey,
 Deputy Superintendent



Dr. Calvin Watts,
 Associate Superintendent



Strategic Objectives:

- Provide and maintain a rigorous Academic Knowledge and Skills (AKS) curriculum that is clearly correlated to the Georgia Performance Standards and prepared for alignment and integration with the Common Core State Standards.
- Support innovative, integrated and accelerated learning activities that challenge all students to apply knowledge and skills by engaging in relevant, meaningful and differentiated tasks focused on information processing, problem-solving, decision-making and collaboration.
- Design, develop and administer comprehensive assessments, aligned with rigorous AKS instruction, for the purpose of using results to plan improved learning for every student.
- Collaborate with teachers and administrators in planning and providing on-going, job-embedded professional learning opportunities that are clearly linked to the data-driven needs to improve performance for all students.



Executive Director, Curriculum and Instruction

Mary Elizabeth Davis

678-301-7290 / fax: 678-301-7208
(Instructional Support Center)

The **Department of Curriculum and Instruction** leads the development of a world class curriculum and the effective implementation of Quality Plus Teaching Strategies. The office promotes the Academic Knowledge and Skills curriculum, supports instruction and assessment of the AKS through a variety of resources, facilitates instructional materials reviews and adoption as well as provides staff development training for teachers and staff. Gwinnett County Public Schools' Curriculum and Instruction Department houses the curriculum offices that lead and support systemwide instruction and assessment of the Academic Knowledge and Skills (AKS) as well as Online Campus



Office of Language Arts

Dr. Alicia McCartney, Director

678-301-7011 / fax: 678-301-7208
(Instructional Support Center)

The **Office of Language Arts** provides leadership and instructional support to schools in the area of Language Arts curriculum. The office assists teachers and staff with appropriate resources and training to teach students through a balanced literacy approach to become successful readers, writers, listeners, and oral communicators.



Office of Mathematics

Anthony Smith, Director

678-301-7037 / fax: 678-301-7208
(Instructional Support Center)

The **Office of Mathematics** provides leadership and instructional support to schools in the area of Mathematics curriculum. The office supports the development of students into competent mathematical problem solvers with a deep conceptual understanding of numbers. Students will reason and communicate mathematically, make connections among mathematical ideas, and become proficient with appropriate computational tools and techniques .

Office of Science

Dr. Jonathon Wetherington, Director

678-301-7036 / fax: 678-301-7208
(Instructional Support Center)

The **Office of Science** provides leadership and support to schools in the area of Science curriculum. The office assists teachers and staff with resources and training to teach problem-solving, inquiry, and critical thinking skills which are embedded in the curriculum throughout the students' K-12 science experience.



Office of Social Studies

Dr. Debbie Daniell, Director

678-301-7028 / fax: 678-301-7208
(Instructional Support Center)

The **Office of Social Studies** provides leadership and support to schools in the area of Social Studies curriculum. The office manages resources and training to assist teachers and staff with providing quality instruction on discipline-based content with interpretative skills focused on maps and globes, information processing, social participation, and problem solving.



Office of Curriculum Development and Instructional Support

Debbie Cate, Director

678-301-6061 / fax: 678-301-7208
(Instructional Support Center)

The **Office of Curriculum Development and Instructional Support** supports schools in all areas of the AKS curriculum. This includes providing professional learning as well as support materials such as instructional planners with Indicators of Achievement , sample interventions and extensions, correlations with standardized tests, and electronic lesson plans for the AKS.

Office of English Language Learner Programs (ELL)
Elizabeth Webb, Director
678-301-7077 / fax: 678-301-7049
(Instructional Support Center)

The **Office of English Language Learner Programs (ELL)** provides leadership and support to ensure that English Language Learners in Gwinnett County Public Schools achieve excellence by attaining proficiency in English and meeting or exceeding grade level AKS in all content areas. Support services include professional development, guidance on research-based instructional practices, intake for middle and high school ELLs, and translation and interpretation services for parents of ELLs.



Office of Health and Physical Education
Chuck Truett, Director
678-301-7040 / fax: 678-301-7009
(Instructional Support Center)

The **Office of Health and Physical Education** provides leadership and support to schools in the area of Health and Physical Education curriculum. The office provides resources and training workshops for teachers and staff. Students learn to become advocates of healthy living, choose healthy behaviors for life and develop a physically active lifestyle. Students are also taught to maintain a health-enhancing level of physical fitness during their school-age years and beyond.



Office of Fine Arts
Robert Andrews, Director
678-301-7015 / fax: 678-301-7203
(Instructional Support Center)

The **Office of Fine Arts** provides leadership and support to schools in the area of Fine Arts which includes dance, music, theatre arts, and visual arts. Commitment and support by central and local level administrators, community, parents, and students enable the GCPS Fine Arts programs to achieve quality standards as an essential element in a world-class educational program.



Office of Instructional Materials
Lisa Burleson, Director
678-301-6828 / fax: 678-301-6829
(Instructional Support Center)

The **Office of Instructional Materials** manages the procurement and distribution of quality instructional materials and technology resources to meet the needs of all learners. Schools are supported as responsible stewards of their financial resources with the selection, purchase and inventory of instructional materials. In addition, the review, pilot, and adoption process for new materials is managed and directed through this office.



Office of Foreign Language
David Jahner, Director
678-301-7020 / fax: 678-301-7209
(Instructional Support Center)

The **Office of Foreign Language** provides leadership and support to schools in the area of Foreign Language curriculum. The office provides resources and training workshops for teachers and staff enabling them to provide quality instruction, encourage interdisciplinary collaboration as they target different languages and diverse cultures.



Office of Technical Education, Computer Science, & Work-Based Learning
Jody Reeves, Director
678-301-7050 / fax: 678-301-7070
(Instructional Support Center)

The **Office of Technical Education** provides leadership and support to teachers in the Technical Education field which prepares high school students for postsecondary education and the demands of the 21st century economy. All courses provide an environment where students can learn the relevance of combining technical skills with academic knowledge. Various resources and training workshops are available to assist teachers and staff in delivering quality instruction in these areas.



Office of Accelerated Programs & Gifted Education
Gayle Adkinson, Director
678-301-7020 / fax: 678-301-7017
(Instructional Support Center)

The **Office of Accelerated Programs & Gifted Education** provides leadership and support to schools in the area of Gifted Education curriculum. The Gifted Education program manages resources and training to enhance learning opportunities that are advanced and accelerated in content and pace. Gifted education classes offer academic experiences that extend the Academic Knowledge and Skills.





Department of Special Education and Psychological Services
Paula Everett-Truppi, Executive Director
678-301-7110 / fax: 678-301-7222

The **Department of Special Education and Psychological Services** supports the Individual Educational Programs of students ages three through twenty-one years of age who are eligible for special education and related services within the district. The special education services are provided on a continuum from the least restrictive to more restrictive environments and are contingent upon educational needs of the student. The department provides a full array of assessment and special education interventions for students requiring such services. The Department works collaboratively with students, schools, families, and the community to increase student achievement and to promote post-secondary success for all students with disabilities.

Office of Instructional Services
Jennifer Fornek, Director
678-301-7107 / fax: 678-301-7222
(Instructional Support Center)

The **Office of Instructional Services** provides leadership and support for the delivery of special education instructional programs. This office works collaboratively with local schools to assist students with disabilities in acquiring the knowledge and skills specified by their Individualized Education Program, and local and state assessment standards. Staff development opportunities are provided for assistant principals, teachers, paraprofessionals, and central office staff.



Office of Psychological Services
Tom Owen, Director
678-301-7100 / fax: 678-301-7098
(Instructional Support Center)

The **Office of Psychological Services** provides an extensive array of psychological services to each of our schools. The services are designed to assist schools with the implementation of research-based interventions for students with academic and/or behavior problems. School psychologists provide comprehensive psycho-educational assessments, participate on Student Support Teams (SST) and special education teams. Psychologists also consult regularly with teachers and parents, counsel students, participate in crisis situations and provide in-services for our teachers regarding a wide variety of topics.



Office of Special Education Compliance
John Shaw, Director
678-301-7104 / fax: 678-301-7222
(Instructional Support Center)

The **Office of Special Education Compliance** supports schools in legal matters arising from federal and state regulations governing the education of students with disabilities. The duties of the office include coordinating all due process issues such as early resolution conferences, mediations, and due process hearings. The office also coordinates Section 504 issues for students throughout the district.

