



# Accountability Report

## Results-Based Evaluation System

Issued 2011–12



# Meadowcreek High School

Tommy T. Welch, *Principal*

Jonathan Patterson, *Area Superintendent*

Gwinnett County Public Schools (GCPS) has developed an accountability system for improving schools called the Results-Based Evaluation System (RBES). RBES fairly and systematically measures a school’s progress, providing a process that clearly communicates expectations; reviews, monitors, and supports school performance; and evaluates that performance.

The Meadowcreek High school council and school leaders collaborated on the highlights included in this accountability report, which also serves as the school’s annual report. The report provides consolidated information on the school’s effectiveness, based on multiple measures and student characteristics. **Please review this report to learn more about the school’s improvement efforts and progress.**

### Key Results from 2010–11 Local School Plans for Improvement

Local School Plans for Improvement are plans developed locally by school administrators, teachers, and parent advisory groups. These plans outline school goals.

**Goals:** Meadowcreek’s 2010–11 goals focused on improving academic achievement in language arts, mathematics, and science; increasing the overall graduation rate; and increase passing rates on the Georgia High School Graduation Tests (GHSGT).

**Results:**

- Meadowcreek posted improvement in passing rates on the math portion of the GHSGT. Meadowcreek High School exceeded state-set target passing rates in math for student subgroups.
- The size of the 2011 graduating class for Meadowcreek High School increased by 79 students.
- In language arts, 87% of full-year students taking the GHSGT for the first time met or exceeded the state standards.
- Meadowcreek High School showed an increase in student performance on the science portion of the GHSGT, with 90% of all first-time test-takers passing.
- Meadowcreek’s Local School Plans for Improvement will continue to focus on teaching a rigorous curriculum while providing the proper support and enrichments to foster high academic achievement.

**CONTENTS:**

- Key Results on Improvement Plans
- 2010–11 Results:
  - Senior Report
  - SAT
  - Gateway Assessment
  - Georgia High School Graduation Tests and Adequate Yearly Progress
  - Advanced Placement Exams
- 2010–11 Highlights
- Staff Data
- Student Data
- School Safety Perceptions

**Tell us what you think about this report.**

**Click here to complete a questionnaire online.**

## 2010–11 Senior Report

	Students Completing HS†	Number of Seniors Planning to Attend College or Postsecondary School*	Number of Honor Graduates	Number of Seniors Taking Advanced Placement (AP) Courses	Number of AP Courses Taken by Seniors	Seniors with Dual Enrollment
<b>Meadowcreek High</b>	498	318	48	305	847	7
<b>GCPS</b>	9,558	7,829	1,905	4,741	13,088	221

†Reflects system-reported data as of August 2011

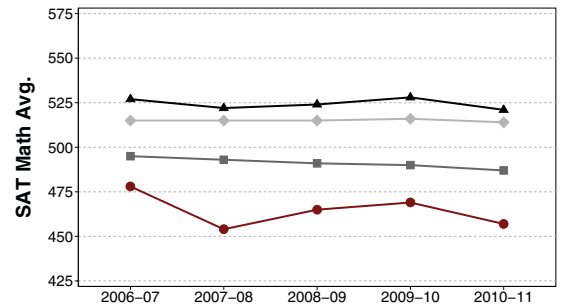
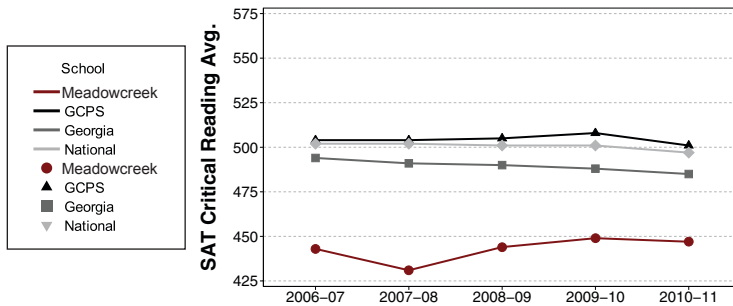
\*Student information self-reported as of April 2011

### 2010–11 Results: SAT

A popular college-admissions test, the SAT features complex reading passages and math concepts, and a writing section. The table to the right shows average scores and percentages of students taking the SAT at our school, compared to the district, state, and nation. The graphs below compare Meadowcreek students' scores to the Gwinnett, state, and national averages on the SAT.

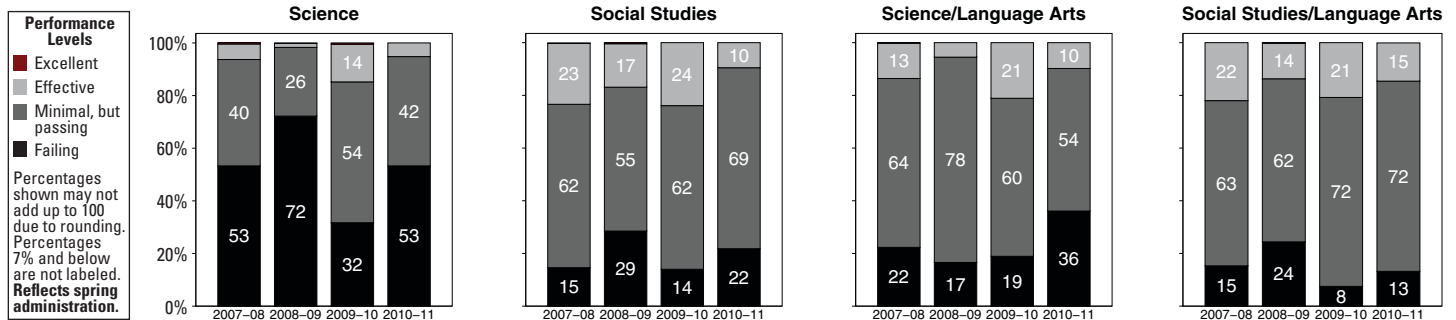
### 2010–11 SAT Averages

	Critical Reading	Math	Writing	Total
Meadowcreek	447	457	429	1333
GCPS	501	521	489	1511
Georgia	485	487	473	1445
National	497	514	489	1500



### 2010–11 Results: High School Gateway

To earn a regular diploma, Gwinnett high school students must pass both GCPS's High School Gateway and the Georgia High School Graduation Tests. Given in the 10th grade, the Gateway essay test covers content in social studies and science, as well as language arts skills—writing, grammar, and spelling. To ensure that more students meet the standard on the high school Gateway, GCPS is offering additional resources, tutorials, and practice opportunities through the school system website. While many students are successful on the test on their first try, those who are not have seven additional opportunities to take and pass the test before graduation.



### 2010–11 Results: Advanced Placement (AP) Exams

Advanced Placement (AP) courses are challenging, college-level classes taught by specially trained high school teachers. Students have the option of taking an AP exam at the end of the school year. Many colleges award credit for passing the exams or allow a student to be exempt from certain college courses. Students exposed to the demanding AP curriculum are well prepared for the rigors of college coursework. The table below shows the percentage of classes taken at Meadowcreek High that were designated as AP classes, compared to the county average. The chart also shows the percentage of optional, course-specific AP exams taken, as well as the percentage of AP exams scored 3 or better (on a 5-point scale). In 2010–11, 34.1% of Meadowcreek students took one or more AP courses, compared to 27.8% of all GCPS high school students.

	2007–08		2008–09		2009–10		2010–11	
	Meadowcreek	GCPS	Meadowcreek	GCPS	Meadowcreek	GCPS	Meadowcreek	GCPS
AP as Percentage of Total Classes Taken	5.8	6.2	8.2	7.3	10.0	8.8	6.9	8.5
% AP Exams Taken	71.8	74.6	64.1	77.3	58.0	77.0	69.9	75.6
% AP Exams Scored 3+	22.3	63.1	19.8	61.8	22.9	57.5	15.8	57.0*

\*Not available from College Board, percentage locally calculated

## 2010–11 Results: Georgia High School Graduation Tests (GHSGT) and Adequate Yearly Progress

Schools earn Adequate Yearly Progress (AYP) status by meeting a series of performance goals that every school, system, and the state as a whole must achieve under the federal No Child Left Behind Act. In Georgia, AYP for high schools is determined using results from the Georgia High School Graduation Tests (GHSGT) in English language arts and mathematics. These tests measure the knowledge and skills of students by assessing how well students have learned the state’s curriculum content standards. To make AYP, high schools must meet state-set student achievement goals and graduation standards for all students, and for all subgroups that have 40 or more students or 10% of the students in grade 11, whichever is greater (with a 75-student cap). In addition, schools must test 95% of all students and of all subgroups with 40 or more students. Georgia reports achievement scores for every subgroup with 10 or more students. However, the state only considers results for subgroups that meet the state-set minimum number of students in determining a school’s AYP status.

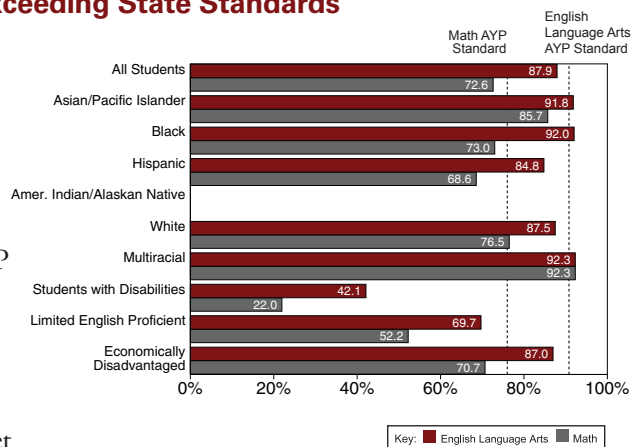
Meadowcreek High did not achieve AYP	All Students	Asian/Pacific Islander	Black	Hispanic	American Indian/Alaskan	White	Multi-Racial	Students with Disabilities	Limited English Proficient	Economically Disadvantaged
Math Participation	Achieved	Achieved	Achieved	Achieved	.	.	.	.	.	Achieved
Math Performance	Achieved	.	Achieved	Achieved	.	.	.	.	Not Achieved	Achieved
Eng. Lang. Arts Participation	Achieved	Achieved	Achieved	Achieved	.	.	.	.	.	Achieved
Eng. Lang. Arts Performance	Not Achieved	.	Achieved	Not Achieved	.	.	.	.	Not Achieved	Not Achieved

This school did not achieve the state’s graduation standard for all students.

• In the table above, only results for subgroups that meet the state-set minimum number of students are used to determine AYP

### Percentage of Students Meeting or Exceeding State Standards

The GHSGT is a curriculum-based test used to measure high school students’ learning. Overall, Meadowcreek High met or exceeded state academic goals on the GHSGT in mathematics, schoolwide and for most student groups, and in English language arts for most subgroups. The school met state-required testing participation requirements. Meadowcreek High achieved 15 of 21 indicators in determining Adequate Yearly Progress (AYP). However, the school did not make AYP because less than 76.0% of students learning English met state standards for mathematics and less than 90.8% of all students and less than 90.8% of students in some subgroups— Hispanic students, students with economic disadvantages, and students learning English—met state standards for English language arts. In addition, the school did not meet the state standards for the percentage of students graduating in four years.



In the chart above to the right, only subgroups with 10 or more students are reported. Results for groups smaller than the state minimum are not considered for AYP. The dotted lines on this graph represent the state’s AYP standard in Math and English Language Arts in 2011. The chart to the right reflects spring and summer test administrations.

### A Message from the Principal About Student Achievement and Academic Initiatives

Throughout the 2010–11 school year, Meadowcreek High School continued to provide rigor with nurture to inspire every student to reach his or her full potential. As a result of the continued hard work and dedication of the community, faculty, staff, and students, Meadowcreek has been nationally recognized for the second consecutive year for its efforts in closing the achievement gap through a rigorous curriculum and quality instruction. *The Washington Post* highlighted Meadowcreek High School as one of the nation’s top schools and among the top 20 within the state of Georgia for closing achievement gaps. In addition, U.S. Secretary of Education Arne Duncan honored Meadowcreek High School by hosting a roundtable discussion at the school on how our school and district continue to sustain overall performance and improvement in student achievement while closing student achievement gaps.

Meadowcreek’s mantra, “Rigor with Nurture,” continues to be the school’s guiding theme. The expectation is that teachers will provide rigorous instruction targeted to meet the needs of individual students. Meadowcreek provides willing, hard-working students with the opportunity to reach their full potential by offering necessary enrichment and intervention. All teachers actively participate in Professional Learning Communities (PLCs) in which teachers collaborate to develop rigorous coursework, engaging lessons, and valid assessments. Student success rates are monitored and goals are set by all teachers for each class. Meadowcreek will continue to offer learning opportunities during and after school to keep Meadowcreek students on track for graduation. Those opportunities include Credit Recovery, School Plus classes, interventions, and enrichment.

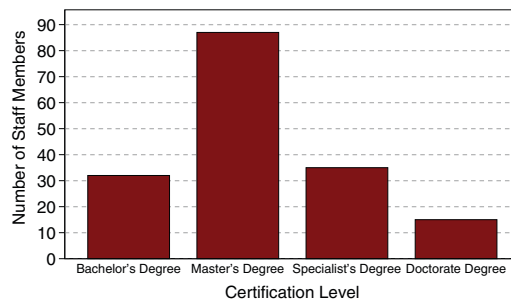
# Meadowcreek High School

## Other 2010–11 Highlights...

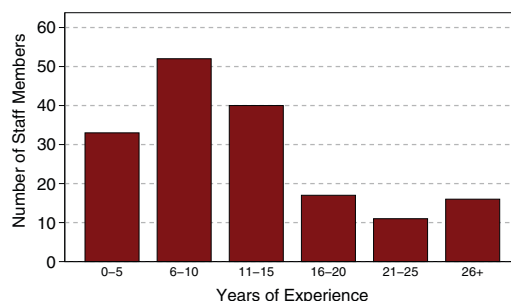
- *The Washington Post* honored Meadowcreek High as being among the nation's top high schools based on the "WP Challenge Index."
- U.S. Secretary of Education Arne Duncan conducted an education roundtable at Meadowcreek High School, discussing how to sustain student performance.
- We are extremely proud of the fact that Meadowcreek was acknowledged by the Georgia Department of Education as a 2012 AP STEM (Science, Technology, Engineering, Mathematics) Honor School. The AP STEM honor recognizes schools where students take AP exams in at least two AP science courses and two AP mathematics courses. The 2012 AP Honor Schools are named based on results from 2010–11 AP classes and exams.
- Strong performance on Advanced Placement (AP) tests resulted in honors for 22 AP Scholars, three AP Scholars with Honor, and five AP Scholars with Distinction.
- Meadowcreek High continued its partnership with the Georgia Institute of Technology to develop the Goizueta STEM Initiative.
- Meadowcreek students represented the state of Georgia in a national culinary arts competition at the 2011 Family, Career and Community Leaders of America Leadership conference in Anaheim, Calif.
- Meadowcreek served as host to the Regional Hispanic College Fair.
- The school participated in the Cluster Homecoming Parade.
- Biology students participated in the Biodiversity Urban Survey Project, sponsored by Fernbank Museum of Natural History and Vulcan's Corporate Lands for Learning.
- The school continued its partnership in the Network for Enhancing Teacher Quality (NET-Q) with Georgia State University.
- The Meadowcreek Marching Band participated in parade and halftime show for the ACC vs. SEC Chick-fil-A Bowl.
- Two students won Congressional Arts Competition scholarship awards. In addition, their artwork hangs in the Washington, D.C. Capitol tunnel.
- Meadowcreek High continued its partnership of 25 years with neighbor and business partner Vulcan Materials.

## 2010–11 Staff Data

### Staff Certification Level



### Experience in Education



## 2010–11 Student Data

	School Year	School Year
	09–10	10–11
<b>Enrollment</b>	2,391	2,675
+American Indian/Alaskan Native*	1%	1%
+Asian*	10%	10%
+Black/African American*	24%	27%
+Hispanic or Latino, <i>any race</i>	57%	55%
+Multiracial, <i>two or more races</i> *	4%	3%
+Native Hawaiian/Pacific Islander*	0%	0%
+White*	4%	4%
Special Education	11%	11%
ESOL	12%	10%
Free/Reduced Lunch	87%	88%
Average Attendance	94%	94%

\*Not Hispanic or Latino

## School Safety Perceptions

Based on responses\* to 2010–11 RBES Perception Survey...

- 59.5% of students agreed or strongly agreed that they felt safe at Meadowcreek High.
- 92.8% of parents agreed or strongly agreed that their child's school was safe.

\*Reflects voluntary responses to parent and student perception surveys.

*The mission of Gwinnett County Public Schools is to pursue excellence in academic knowledge, skills, and behavior for each student, resulting in measured improvement against local, national, and world-class standards.*

### Meadowcreek High School

4455 Steve Reynolds Boulevard, Norcross, GA, 30093  
(770) 381-9680 • [www.meadowcreekhighschool.org/](http://www.meadowcreekhighschool.org/)  
Tommy T. Welch, Principal

### Gwinnett County Public Schools

437 Old Peachtree Rd., NW • Suwanee, GA 30024-2978  
[www.gwinnett.k12.ga.us](http://www.gwinnett.k12.ga.us)

### 2011 Gwinnett County Board of Education

Dr. Robert McClure, 2011 Chairman;  
Louise Radloff, 2011 Vice Chairman;  
Carole C. Boyce; Dr. Mary Kay Murphy; and Daniel D. Seckinger,  
J. Alvin Wilbanks, CEO/Superintendent