

ADDITION AND ALTERATIONS TO
NORTH GWINNETT HIGH SCHOOL
 20 LEVEL CREEK ROAD, SUWANEE, GA 30024
 FOR
 GWINNETT COUNTY BOARD OF EDUCATION
 GWINNETT COUNTY, GEORGIA

DATE: 11/16/2011
 JOB NO.: DX-11-001
 DWG. BY: XXX
 CK. BY: XXX

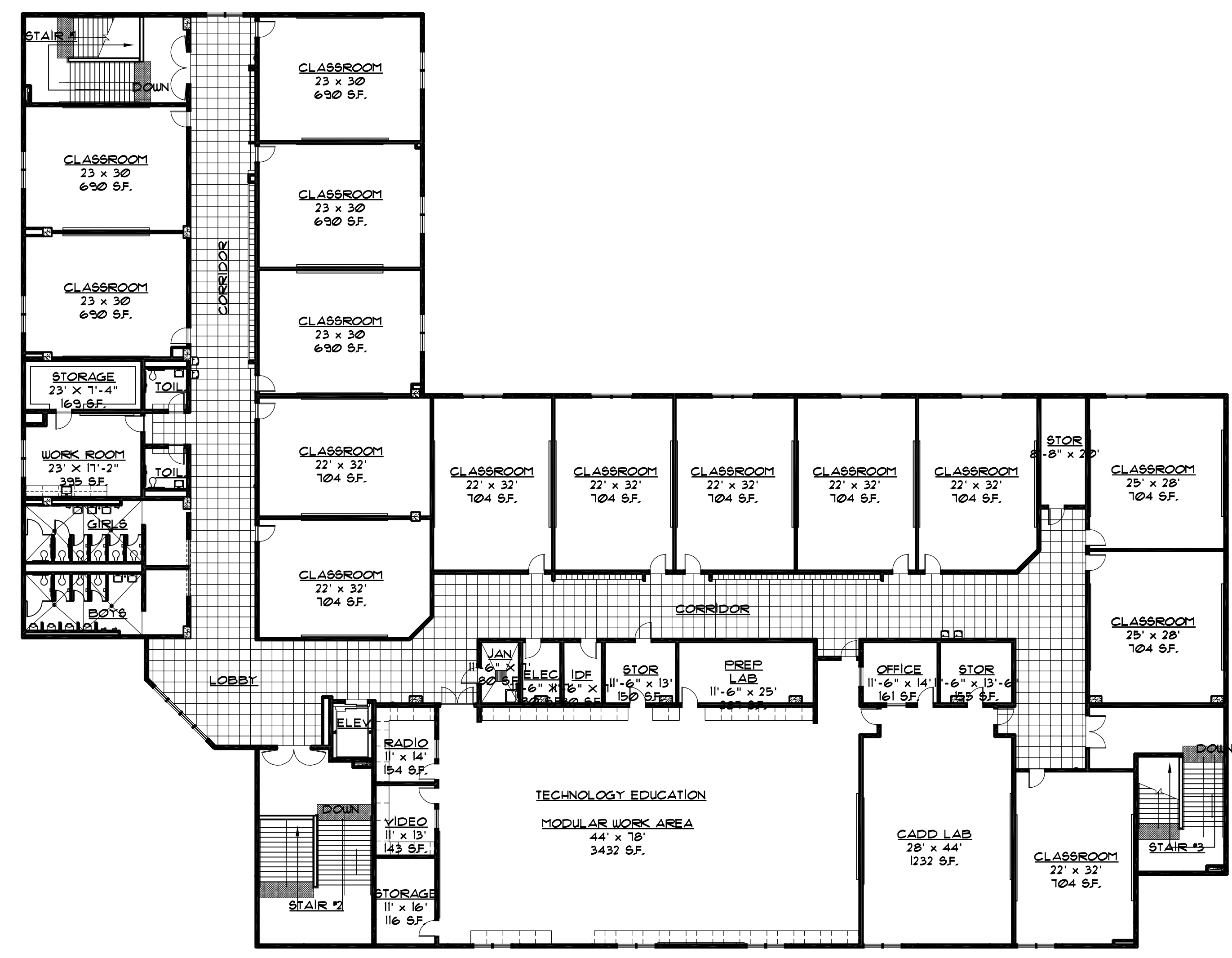
cunningham forehand matthews moore
 cunningham, forehand, matthews & moore, architects, inc. - 2011 manchester street, n.e. - atlanta, georgia 30324 - phone (404) 873-2152

cunningham forehand matthews moore

RFQ-2



1 SECOND FLOOR PLAN- NEW ADDITION
 RFQ-2 1/8" = 1'-0"



1 THIRD FLOOR PLAN- NEW ADDITION
 RFQ-2 1/8" = 1'-0"



DO NOT DUPLICATE
 WITHOUT PERMISSION